

Camlock Cylinder

BMZ 1090



Application:

Camlock cylinder with hex fastening nut for control cabinets, lockers, mailboxes, key cabinets, etc.

Key rotation 90°, key can only be removed when locked.

Specification:

- Housing supplied in solid natural brass with nickel plating
- Zinc coated steel cam
- Nickel-plated brass hex fastening nut
- Reversible key made from nickel silver

Included with the cylinder:

- 57mm Cam
- Cylinder fixing plate
- Installation and maintenance instructions

Available Patented Systems:

- quattro Plus (K85)
- expert Plus (K83)

Available Legacy Systems:

- quattro Plus (K58)
- expert (K56)

Standard Surface Finishes:

- Nickel Plated (NI)
- Satin Brass (SB)

Special Surface Finishes:

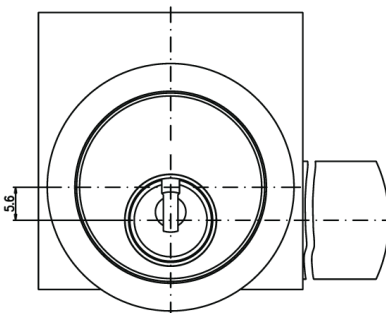
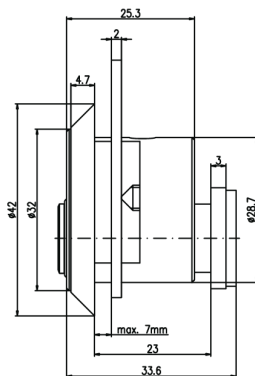
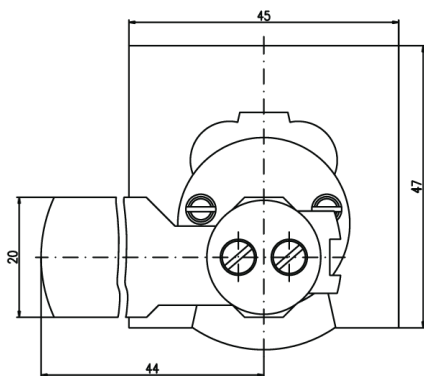
- Satin Chrome (CR)
- Polished Chrome (CRP)
- Polished Brass (PB)
- Medium Bronze (BM)
- Dark Bronze (BD)
- Black, Matt (BKM)

Key Optional extras:

- dormakaba key bow clips available in 11 colours

Extras:

- Large selection of alternative cams available. Please contact your dormakaba sales representative for more information



Installation Hole

